

SR 0926 Improvement Project Public Meeting #2

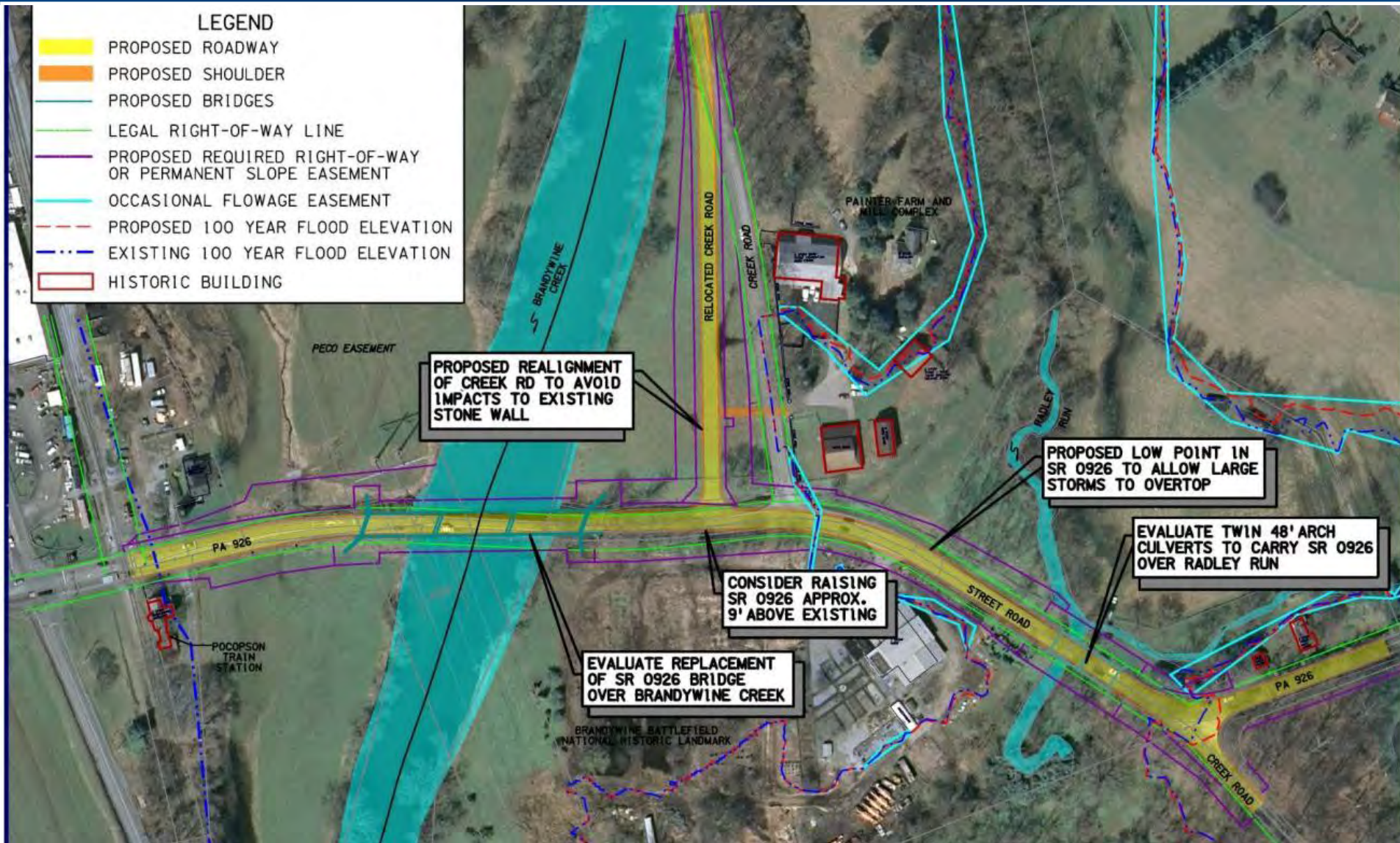
March 30, 2016



Project Area



SR 0926 Improvement Project

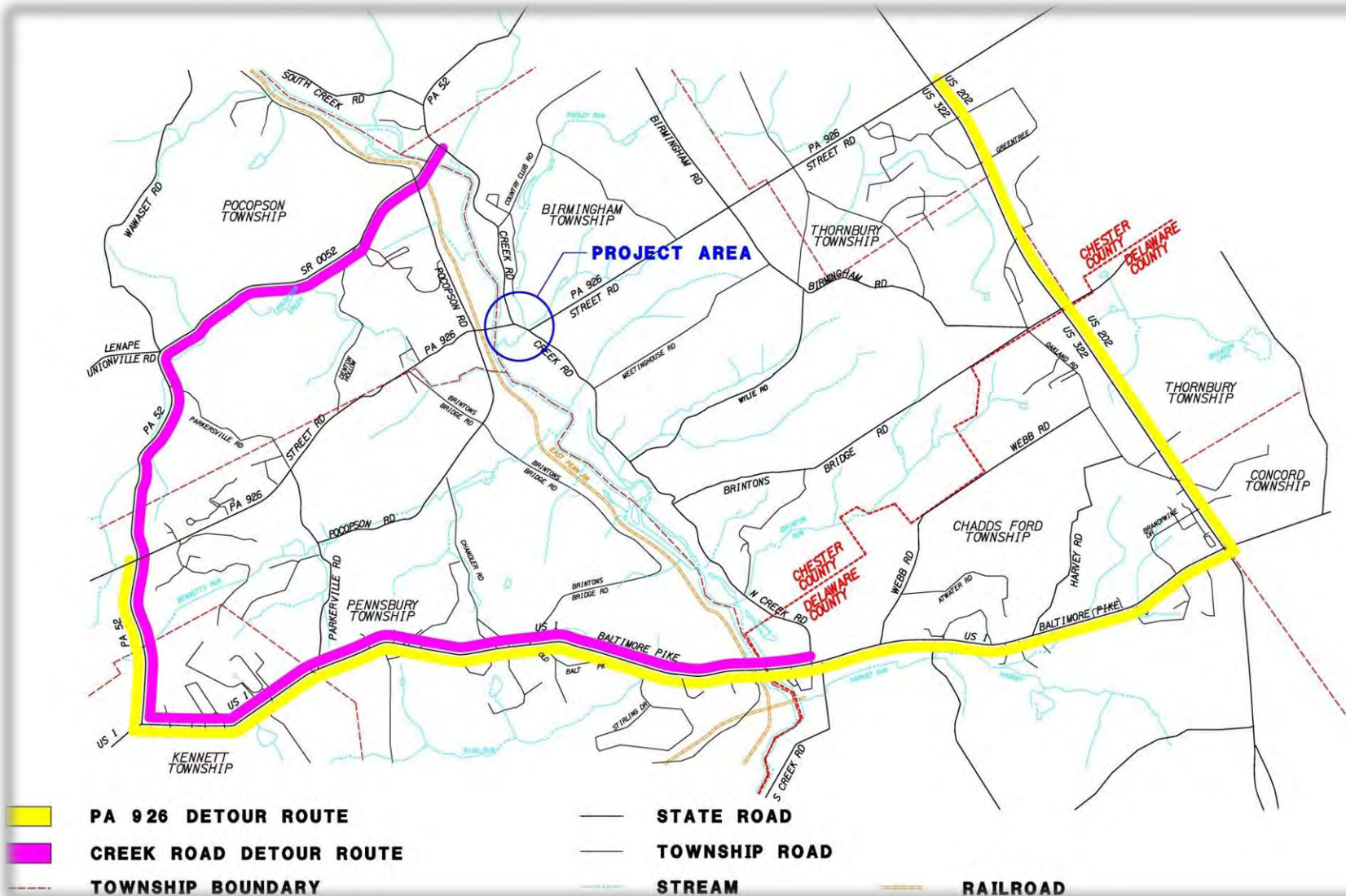


Outcomes of Public Meeting #1

- **Concerns about Traffic During Construction**
- **Concerns about Duration of Construction**
- **Aesthetic Issues**
- **Project Communication**

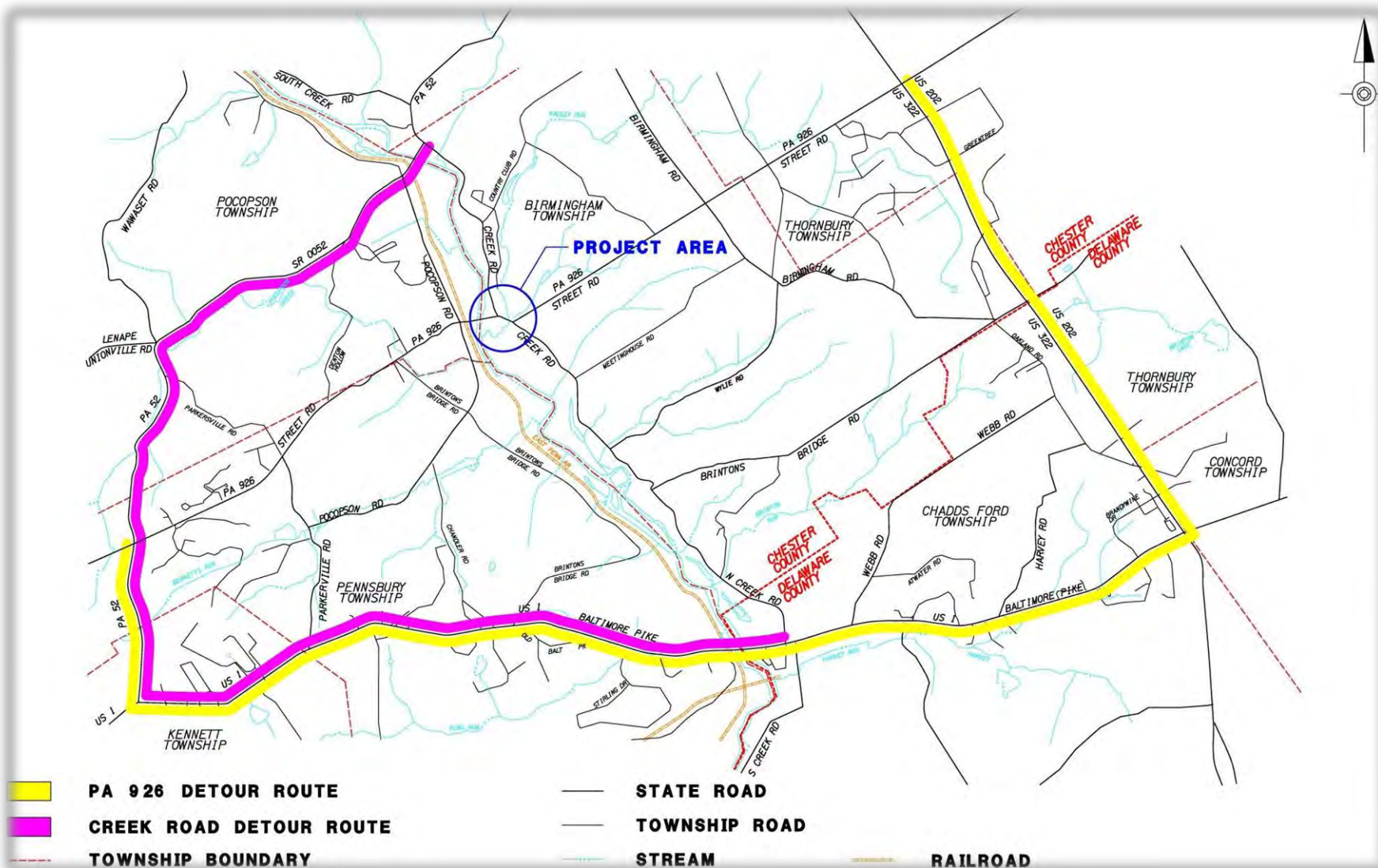
Outcomes of Public Meeting #1

- **Concerns about Traffic During Construction**
- **Concerns about Duration of Construction**
- Aesthetic Issues
- Project Communication



SR 0926 Detour (Creek Road to Pocopson Road)

- Detour is planned to be six months, starting in late February and ending prior to opening of the 2017-2018 school year.**
- Main detour route is US 202 to US 1 to PA 52.**
- Modification to signal times will be included in the contract at certain intersections.**
- This detour will be used to construct SR 0926 from the railroad tracks to existing Creek Road, including the new Brandywine Creek Bridge**



Creek Road Detour

- **Detour is planned to be during the summer holidays in 2017.**
- **Main detour route is US 1 to PA 52.**
- **This detour will be used to construct SR 0926 from existing Creek Road to the Creek Road/SR 0926 split, including the new Radley Run culvert**
- **PA 52 bridge was overlaid last year.**

Detour Length Assumptions

- **The schedule was set assuming 6 day work week, 10 hour work day.**
- **There will be a significant penalty to the contractor if not completed on time**
- **There isn't any "incorporated" utility work.**

Outcomes of Public Meeting #1

- Concerns about Traffic During Construction
- Concerns about Duration of Construction
- **Aesthetic Issues**
- Project Communication

Project Aesthetics

- **The Aesthetics are designed to help the project blend into the Brandywine River Valley, not to have the bridge and other project elements stand out.**
- **See Renderings presentation in adjacent area of gymnasium**

Project Aesthetics

Bridge Aesthetic Features:

- **Three Span Bridge with Narrow Cross Section**
- **Open Railing, Painted Brown**
- **Bridge Beams Painted Brown**
- **Variegated-Brown, Field-Stone Formliner on Piers and Abutments.**

SR 0926 over Brandywine Creek



Existing SR 0926 Bridge over Brandywine Creek



Proposed SR 0926 Bridge over Brandywine Creek



SR 0926 Twin Arch Culverts over Radley Run



Existing SR 0926 over Radley Run



SR 0926 over Radley Run



Project Aesthetics

Sympathetic Design will include:

- **2:1 Earthen Slopes**
- **Native Grass and Wildflower Mix,**
- **In-Kind Replacement of Split Rail Fencing,**
- **Wooden Sign Posts**
- **Brown-Painted Guide Rail.**

SR 0926 and Creek Road Raise/Realignment



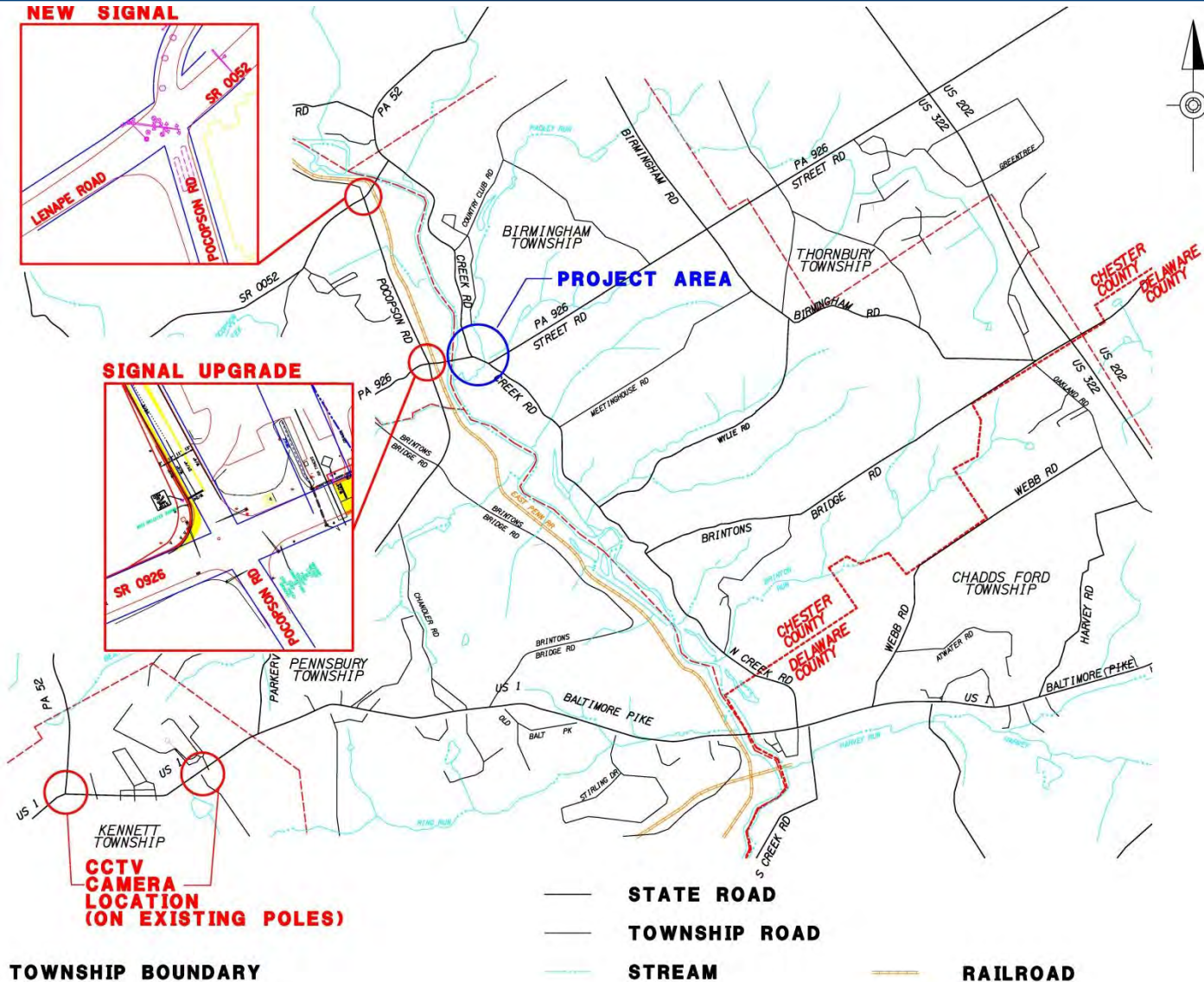
Existing SR 0926 Bridge/Creek Road – View #1



SR 0926 Bridge/Creek Road – View #1



Project Additional Work

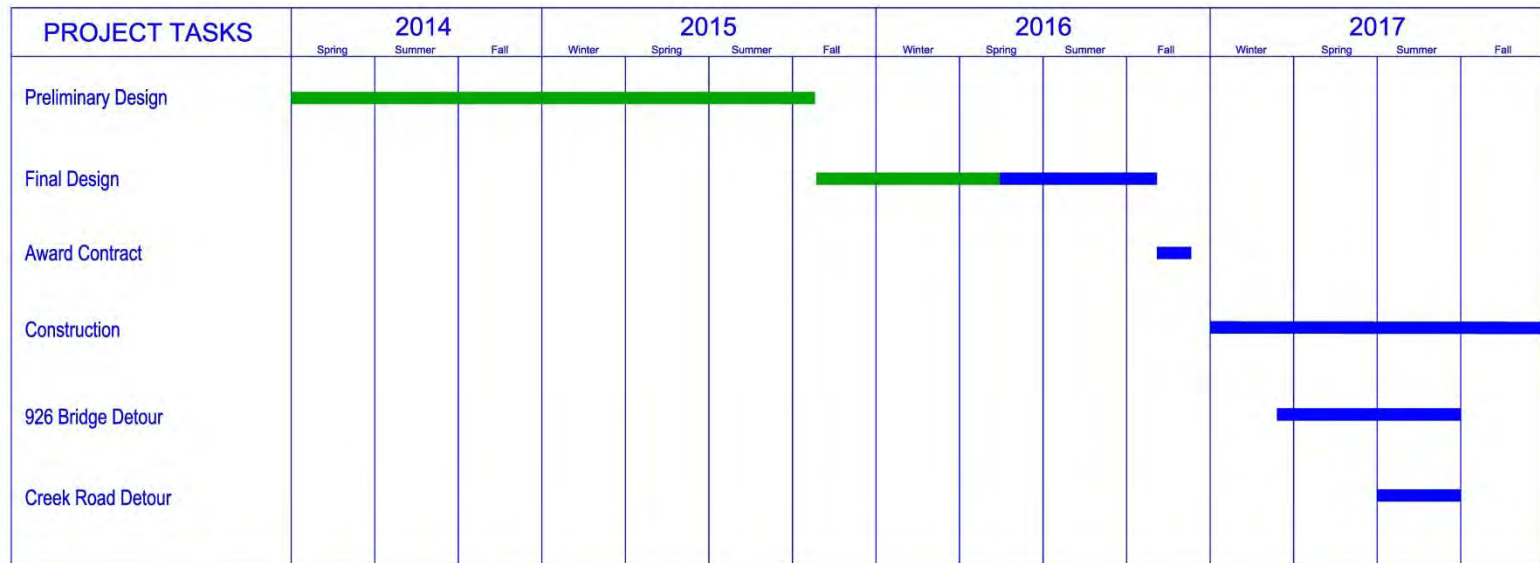


Detour/Construction Points

- **New signal will be constructed at PA 52/Pocopson Road BEFORE detour is enacted.**
- **All utilities are to be relocated prior to construction starting and there isn't any coordinated utility work.**
- **Contractor will be required to maintain access to all adjacent properties throughout construction**

Anticipated Project Schedule

S.R. 0926, SECTION 53S IMPROVEMENT PROJECT Birmingham and Pocopson Townships



Completed 

Planned 

Project Communication

- www.PA926.com

Questions

LeAnne Fullard
PennDOT Project Manager
610.205.6581
lfullard@pa.gov